

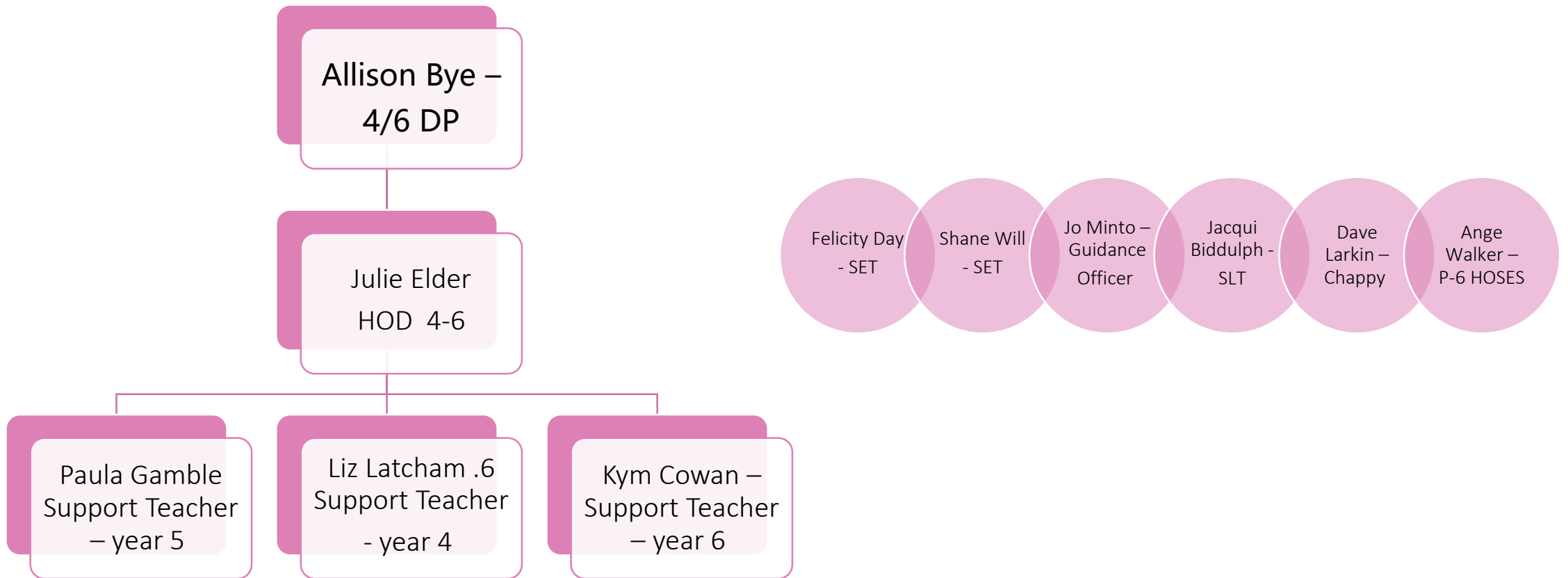
# 2023 PARENT PARTNERSHIP YEAR

Meridan State College -

"Learning together to  
achieve our best"



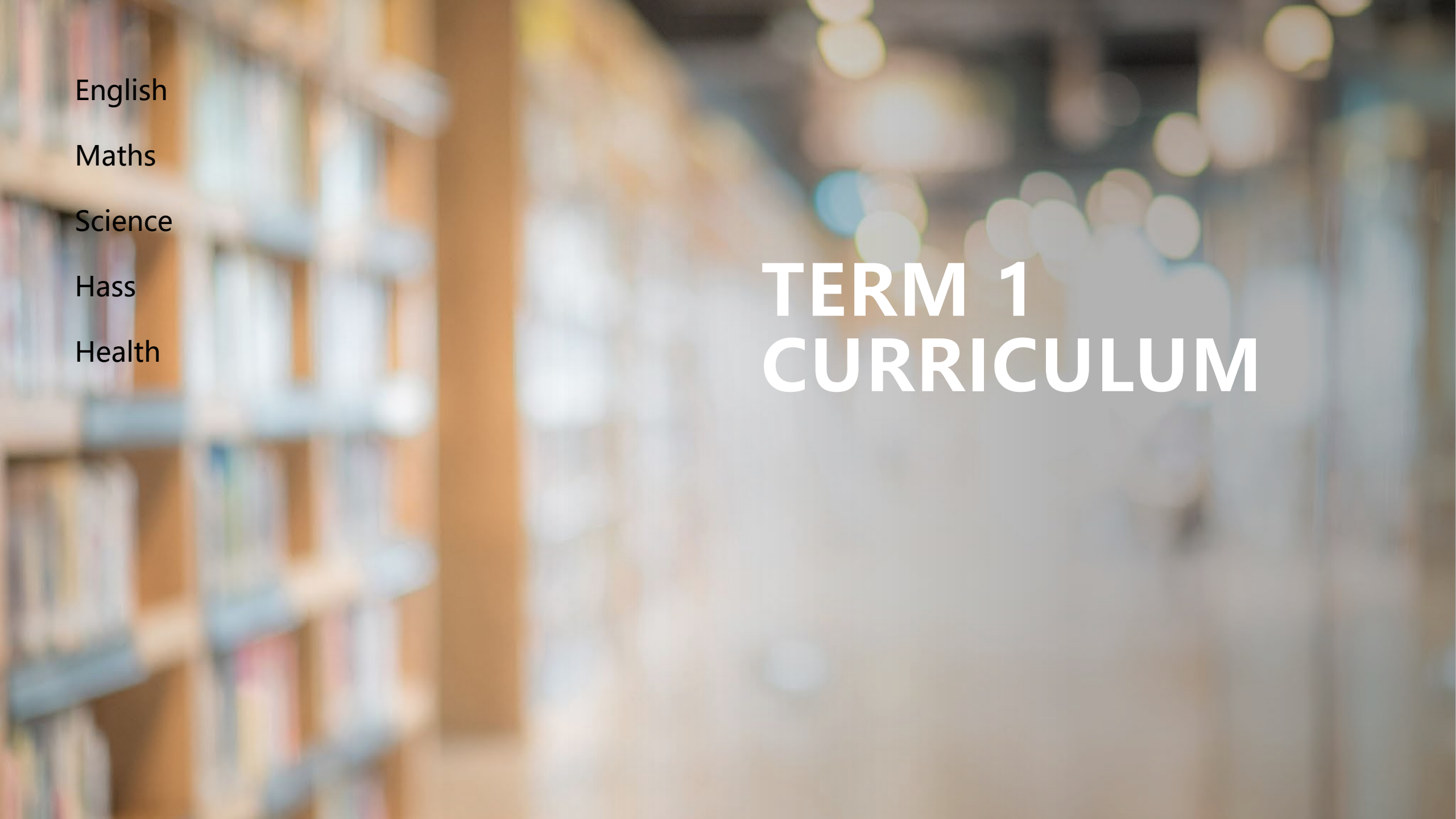
# Our 4-6 Wrap-Around Team



# College Priorities 2023

**Know the Pedagogy:** Enacting the intended curriculum through agreed pedagogical principles to support each student's learning.

**Wellbeing:** Improving the wellbeing of ourselves and our teams, through the explicit development of personal wellbeing strategies and skills.



English

Maths

Science

Hass

Health

# TERM 1 CURRICULUM



## English

In this unit, students will read "The Twits" by Roald Dahl and examine the language features and text structure used by the author to entertain the reader. They plan, draft and publish a new chapter of the "The Twits" for an audience of their peers.

What can we learn from Roald Dahl about writing entertaining stories?



## The Arts

Linked with the English unit, "The Twits" students will study the cartooning of Quentin Blake and how it is used to support and enhance Roald Dahl's stories. They will explore and study the art of cartooning through regular workshops using online resources (Cartoon Dave) to learn art techniques. They will use their new learning to create an illustration that will support their Twits narrative.



## SCIENCE – Shoe design

In this unit, students will learn about the design process and how it is used to design sandshoes and sneakers that are functional and appealing. They will explore the features, components and materials used in shoe design and designers use inspiration boards and they will use design skills and their knowledge to work in teams to design a pair of shoes that meet the needs of a client.



## Mathematics

Students will be learning to:

- **Number and place value** - make connections between representations of numbers; partition and combine numbers flexibly; recall multiplication facts; formulate, model and record authentic situations involving operations; compare large numbers
- **Number and Place value** - identify odd and even numbers; make generalisations about the properties of odd and even numbers; make generalisations about adding, subtracting, multiplying and dividing odd and even numbers
- **Chance** - compare dependent and independent events and ,describe probabilities of everyday events.



## HASS

Students will investigate the history of Australia before, during and after European settlement to answer these key inquiry questions:

**What were the significant events the lead to the English colony in Australia? What were the experiences of the people involved?**

# Term 4 Success Criteria

## English



Use **quotation marks** to signal direct speech.



Use **direct speech** to add interest and develop characters.



Use **pronoun** references to link ideas between sentences.



Re-read and **edit** my writing to improve my writing.



Use **accurate spelling** and **punctuation**.



Write a trick story with a logical **sequence of events**.



Write a trick story using everyday language.

Students in year 4 are working on an English and Maths goal over this term. The success criteria allows them to see where they are currently sitting and what their next goal or step to success is. Have a conversation with your child about where they are up to on our success criteria and what they are working on to improve.



Use **language features** including:

- ✓ *nouns and noun groups*
- ✓ *verbs and verb groups*
- ✓ *adverbs and adverb groups*
- ✓ *prepositional phrases*

to add interest and detail to my writing



Sequence events to **build tension** to hold the audience's interest.



Writes **different sentence types** for impact.



**Create** a chapter with a **developed** storyline, characters or setting

## Mathematics



Investigate and make generalisations about  $+$   $-$   $\times$   $\div$  odd and even numbers.



Create the largest or smallest odd and even numbers from a set of digit cards.



Identify odd and even numbers between two numbers.



Identify odd and even numbers to 10 000.



Create a suitable diagram or model to prove a number is odd or even.



Identify odd and even numbers to 100.

We are learning to recall multiplication and division facts and solve problems using appropriate strategies for multiplication and division.

We are learning to identify and explain unknown quantities in number sentences.



Explain how you know the answer to a problem will be odd or even.



Apply odd and even numbers to multistep problems and investigations.



Solves missing addend problems using knowledge of odd and even numbers.





# SPECIALIST LESSONS

**Each week our classes participate in Specialist Lessons, these include:**

**Technologies with Mr Randall**

**P.E, with Mr Hughey**

**Music with Mr. Rees**

**Please contact your child's teacher if you are wanting to know which days your student attends these lessons.**

**Each class will attend weekly Library visits where students have the opportunity to borrow books.**

**We have fortnightly assemblies in our Sports Performance Centre on Monday afternoon' s from 2:15pm**

**These will be held on even weeks for 4-6**



## SPECIALIST TIMES

	MONDAY	TUESDAY	WEDNESDAY	THURSDAY	FRIDAY
4PC	PE (1 hour)	Music		Library	Digital Technology (1 hour)
4DS	PE (1 hour)	Library Music			Digital Technology (1 hour)
4CA	PE (1 hour)	Music Library			Digital Technology (1 hour)

## Weekly Behaviour Focus - Term 1

<b>Week 1</b>	Establishing Classroom rules, Routines and Expectations	<b>Week 6</b>	Take responsibility and accept consequences
<b>Week 2</b>	Following instructions	<b>Week 7</b>	Move safely
<b>Week 3</b>	Right place, right time and enter/exit with permission	<b>Week 8</b>	Follow toilet expectations
<b>Week 4</b>	Be a good listener	<b>Week 9</b>	Respect others
<b>Week 5</b>	Keep hands, feet and objects to yourself	<b>Week 10</b>	Wear correct uniform

# Homework

## Homework Reading Log



Week	Books Read	Pages

**Number facts x 10**  
**Learn your tables any way**  
**you like! Remember**  
**Mangahigh activities**

**You must type out your number facts  
and spelling words here every night.**

Monday	Tuesday	Wednesday	Thursday

Monday	Tuesday	Wednesday	Thursday

# BYOX Important device information

- This is the fifth year that Year 4 have taken part in the BYOX (Bring your own device x-multiple devices) program. This exciting program provides students with many opportunities to prepare themselves for 21<sup>st</sup> Century learning. Because we use these devices in the classroom on a daily basis, it is important that students ensure that they have fully charged their devices before coming to school.
- ONE NOTE - Class workbook
- Websites - consent form required for student access
- Tech support - Library help desk before school, first lunch break and after school.
- Internet safety - cyber talks...



# Term 1 Calendar events


## Term 1 Important Dates

- ☐ Friday 3rd February Swimming Carnival
- ☐ Week 4 – Investiture 9:20am Tuesday 14<sup>th</sup> Feb
- ☐ Week 4 – Parents as Partners afternoon Wednesday 14<sup>th</sup> Feb
- ☐ Week 8 - Book online for parent teacher interviews
- ☐ Week 7/8 - Swimming Lessons
- ☐ Week 9 – Parent Teacher Interviews
- ☐ Week 9 – School photos Tuesday 21<sup>st</sup> March
- ☐ School assemblies will be held Fortnightly on Monday afternoons



# Student Engagement and Wellbeing

**Morning Meeting**



Greeting

Activity

Values/Expectations

Announcements

What Went Well



**★ STAR PASS! ★**

Name: \_\_\_\_\_


Class: \_\_\_\_\_

☐ I was Respectful



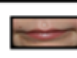



☐ I was a Responsible Learner

☐ I was Safe

Signature: \_\_\_\_\_



**Circle Time Rules**

<b>We listen</b>	 Eyes watching  Ears listening  Lips closed  Hands in laps Boots on chairs Feet on the floor
<b>One person speaks at a time</b>	
<b>We can pass</b>	
<b>We are respectful</b>	



# IMPORTANT REMINDERS

- Before and after school processes - Students should not be at school before 8:15
- Mobile phones
- Uniforms
- Signing in late or early
- Absences – an absence text will be sent by 10 am if an earlier notification has not been made. Please respond to this text with the reason for absence so we can adjust rolls.
- Playgrounds are out of bounds before and after school

# PARENTS AS PARTNERS

Contact Details:

Allison Bye – [abye3@eq.edu.au](mailto:abye3@eq.edu.au)







# THANK YOU

Any questions?

